



# UPM International Summer School

## Artificial Intelligence



ETSIINF, 22, 23 & 26 July 2019

Instructors: Prof. Dr. Asunción Gómez-Pérez

Mr. Alfonso Tamés

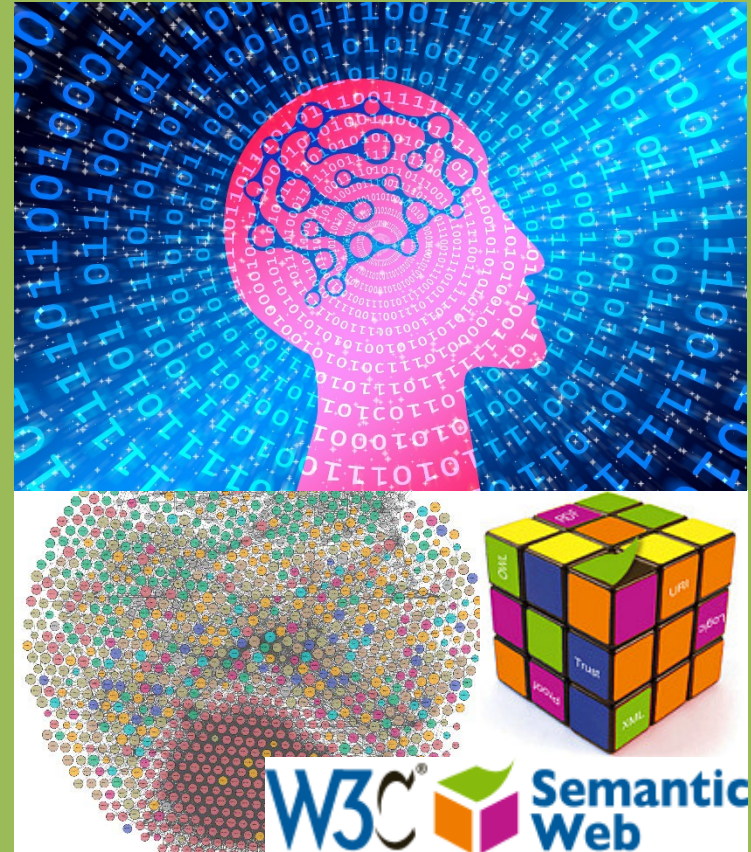
Dr. María Poveda-Villalón

Artificial Intelligence (AI) refers some sort of intelligence that allows machines to emulate intelligent behavior or to do things that people most of the times do better. AI technologies have an important impact in our daily activities in business, as individuals, and as a society.

Students: Bachelor

Pre-requisites: None

ECTS: 1 (10 in-class hours)





# UPM International Summer School

## Artificial Intelligence

### Syllabus

- MODULE 1: I. Introduction to Artificial Intelligence, including the industrial and legal, social and ethics impact of Artificial Intelligence  
II. Current technologies and trends In Ontological Engineering  
III. Linked Data

MODULE 2: Laboratory: practical assignment

MODULE 3: Intelligent Enterprise Unleashed  
Alfonso Tamés, Accenture

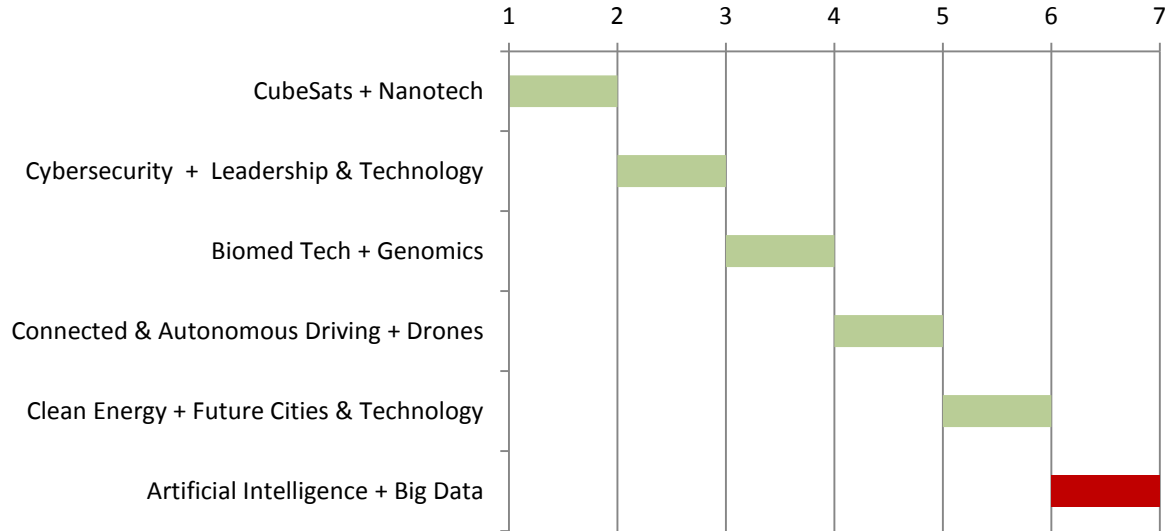




# UPM International Summer School

## Artificial Intelligence

### Schedule



Week	Monday	Tuesday	Wednesday	Thursday	Friday
6	Lectures I Lecture II	Practical Assignment			Industry Talk



# UPM International Summer School

## Artificial Intelligence

### Faculty



Prof. Asunción Gómez-Pérez is full professor in Artificial Intelligence. She is Fellow of the European Academy of Science (2018). She received the ARITMEL Award - National Prize of Computer Science 2015, the UPM Annual Research Award (2015) and the 2nd National Ada Byron Prize for Woman in Technology (2015). She leads the Ontology Engineering Group. She is Vice-Rector for Research, Innovation and Doctoral Studies at Universidad Politécnica de Madrid. Her research areas include: Ontological Engineering, Semantic Web, Linked Data, and Multilingualism in Information and Knowledge Management.

**Alfonso Tamés** is the Accenture Managing Director leading Europe Blockchain practice and technology innovation for Spain, Portugal and Israel. He also collaborates as the UPM/Accenture AI Innovation Space Deputy Director and IE International MBA Blockchain TechLab Mentor. Mr. Tamés began his consultancy career in Accenture in 2003. Over the last 15 years, he has provided technology advisory and project/program management and execution services to some of the leading international companies in financial services, retail, travel and transportation, hotel brands and pharma markets, spending more than six years on overseas collaborations around Europe, USA and Southeast Asia.



**Dr. María Poveda-Villalón** is a researcher at the Universidad Politécnica de Madrid Ontology Engineering Group. Her research areas include Ontological Engineering, Knowledge Representation and the Semantic Web. She has worked in the context of more than ten Spanish and European research projects. She has co-organized a number of events like the Linked Data in Architecture and Construction Workshop since 2015 and workshops and tutorials in the Semantic Web field. She designed and developed OOPS!, an on-line system for evaluating ontologies that has been adopted worldwide and has been used from more than 60 countries and more than 6000 times.